

Sensor Calibration

F3211, F3212, F3213, F3215, F3215

CONTENTS

1	Setup.....	3
1.1	Prerequisites	3
1.2	Install APK	3
1.3	Uninstall APK.	5
1.4	Disable debug mode.	5
2	Calibration.....	6
2.1	Launch	6
2.2	G Sensor	7
2.3	Proximity Sensor.....	9
2.4	Ambient Light Sensor	11
2.5	Color Theme	13
3	Revision History	15

1 Setup

1.1 Prerequisites

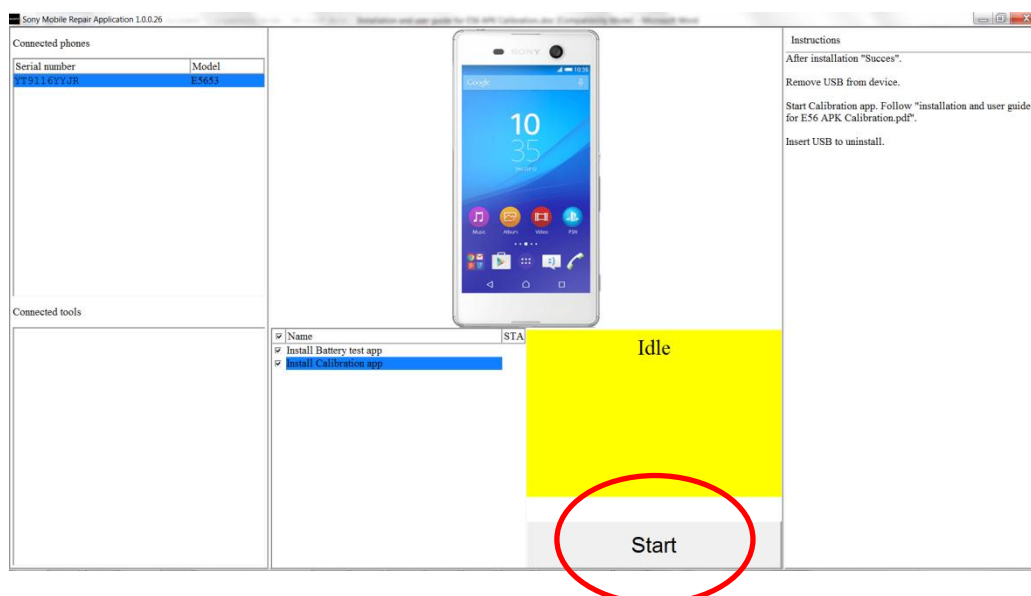
Phone software version should be 36.0.A.1.93 (36.0.B.1.93) or later.

1.2 Install APK

Launch Sony Mobile Repair Application.



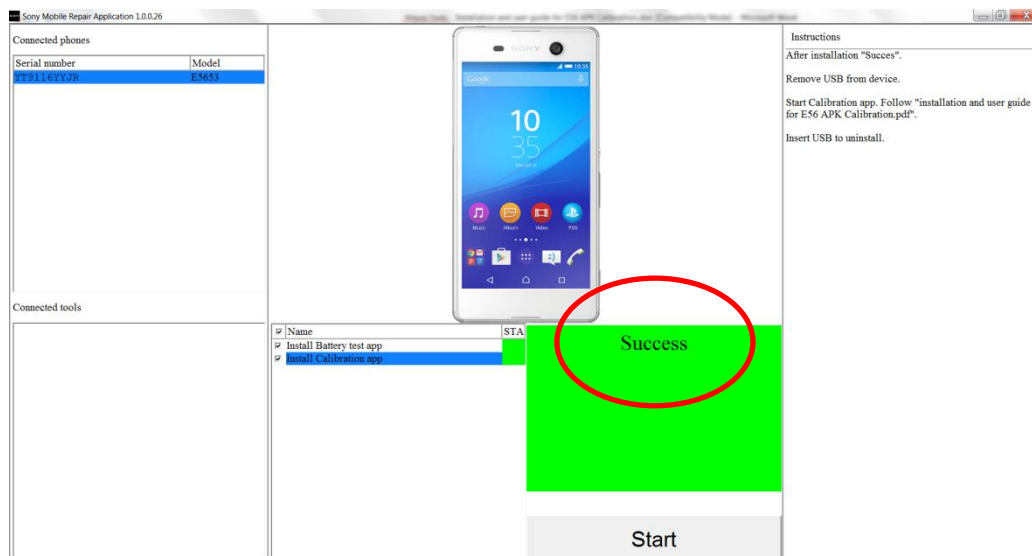
Enable USB debug mode in phone and connect to Sony Mobile Repair Application. Press Start to install Calibration app.



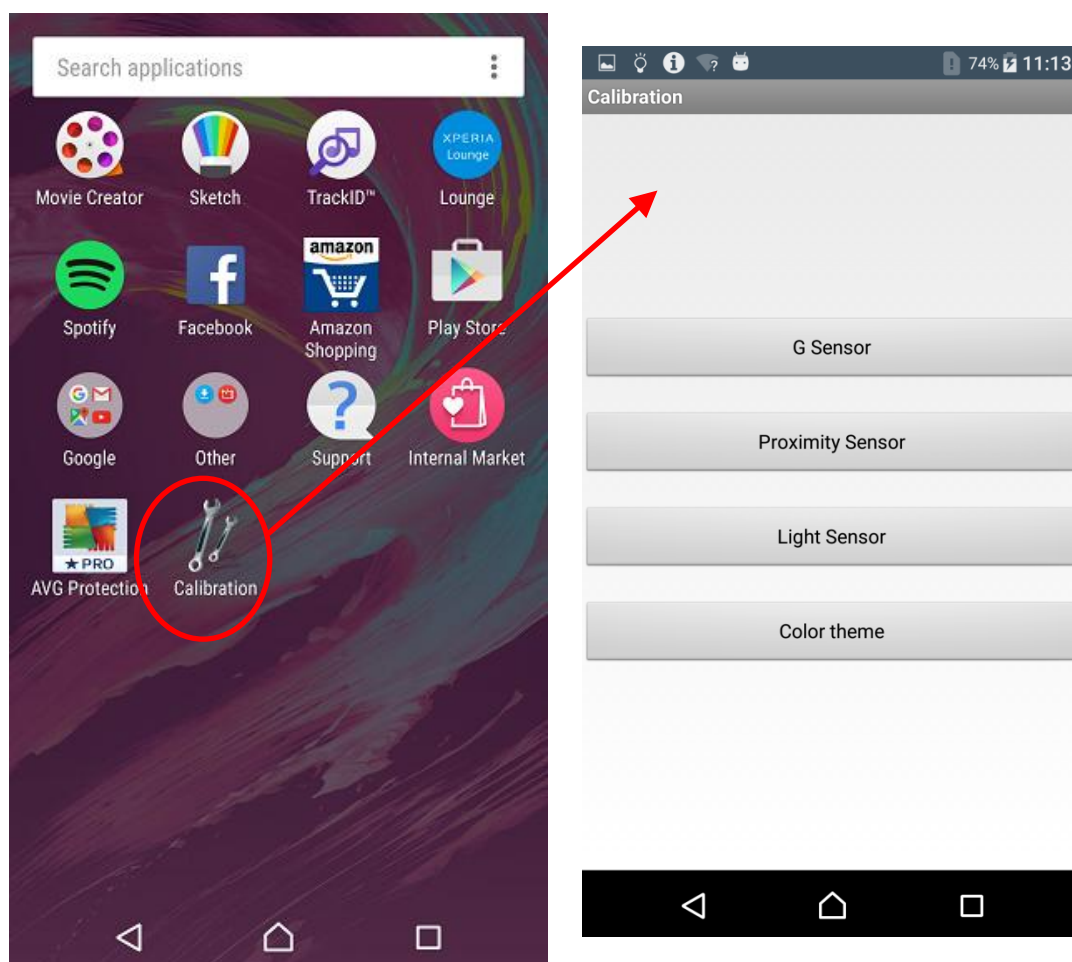
SONY

Test & Calibration (elect)

When Success installation, then remove USB from device.

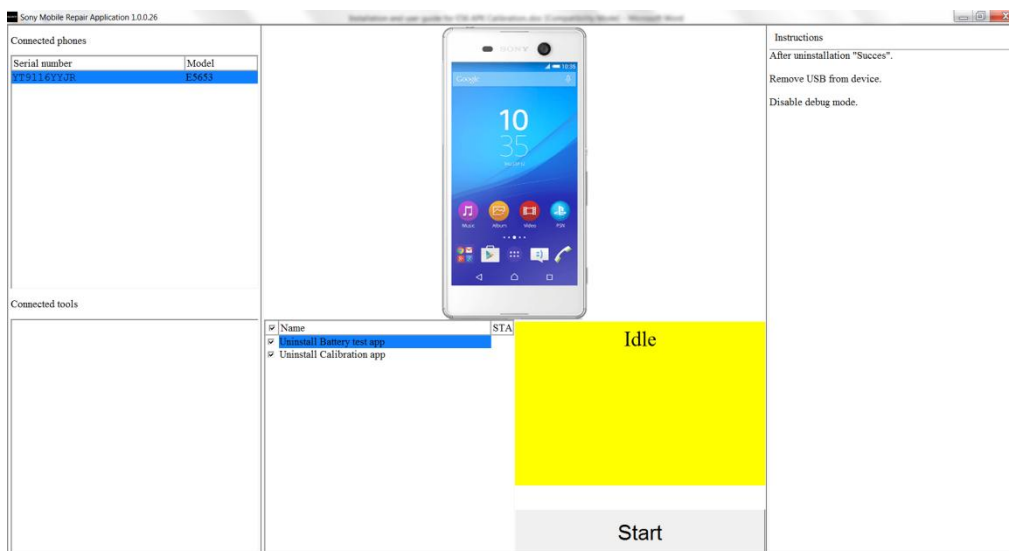


Press Calibration Tool to enter Customer Service Tool menu.
Refer to chapter 2 for the each calibration procedure.

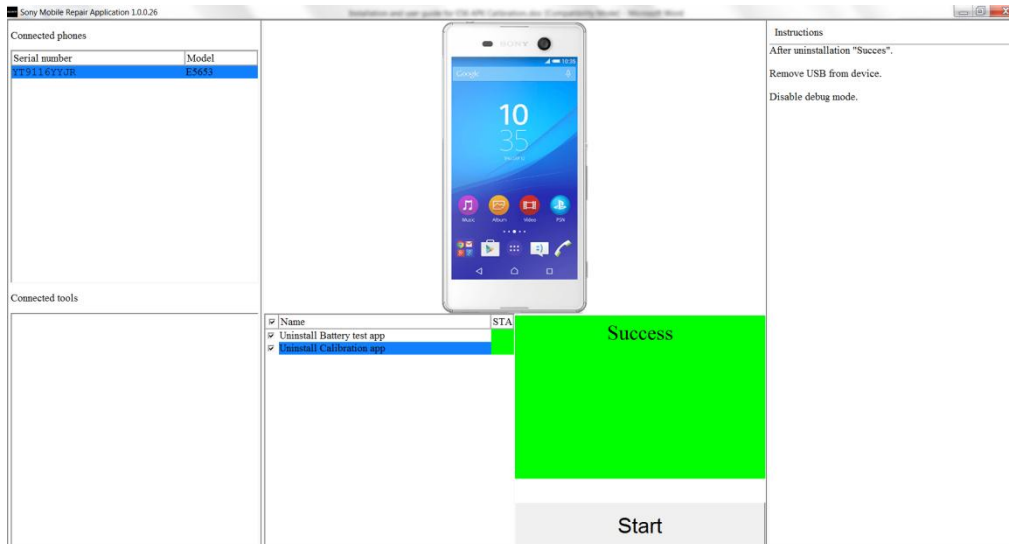


1.3 Uninstall APK.

After successful Calibration, the calibration APK will be uninstalled.
If not connect phone to Sony Mobile Repair Application.



Press **Start** to Uninstall Calibration app.
When Success Uninstall, then remove USB from device.



1.4 Disable debug mode.

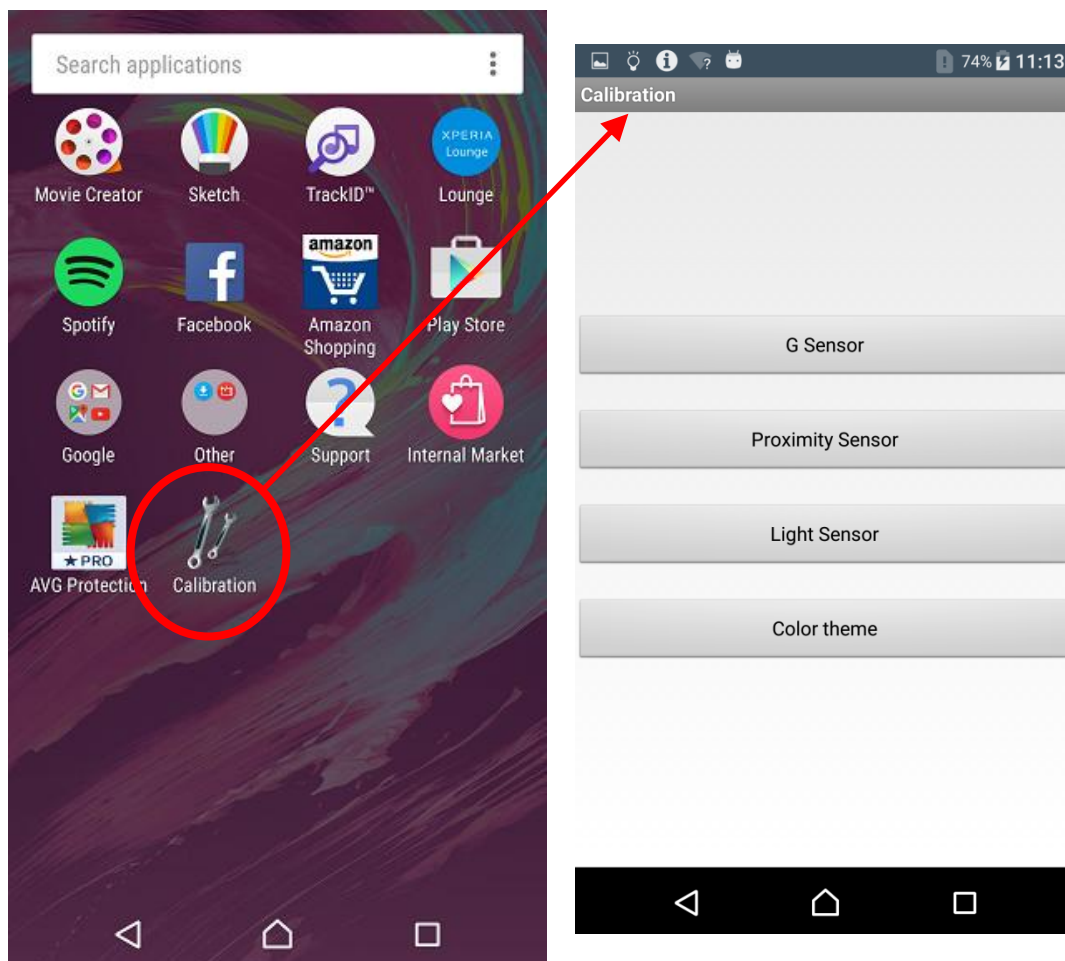
Remember to disable debug mode in phone.

2 Calibration

2.1 Launch

Enter the Calibration tool's main menu by click the app icon in Launcher.

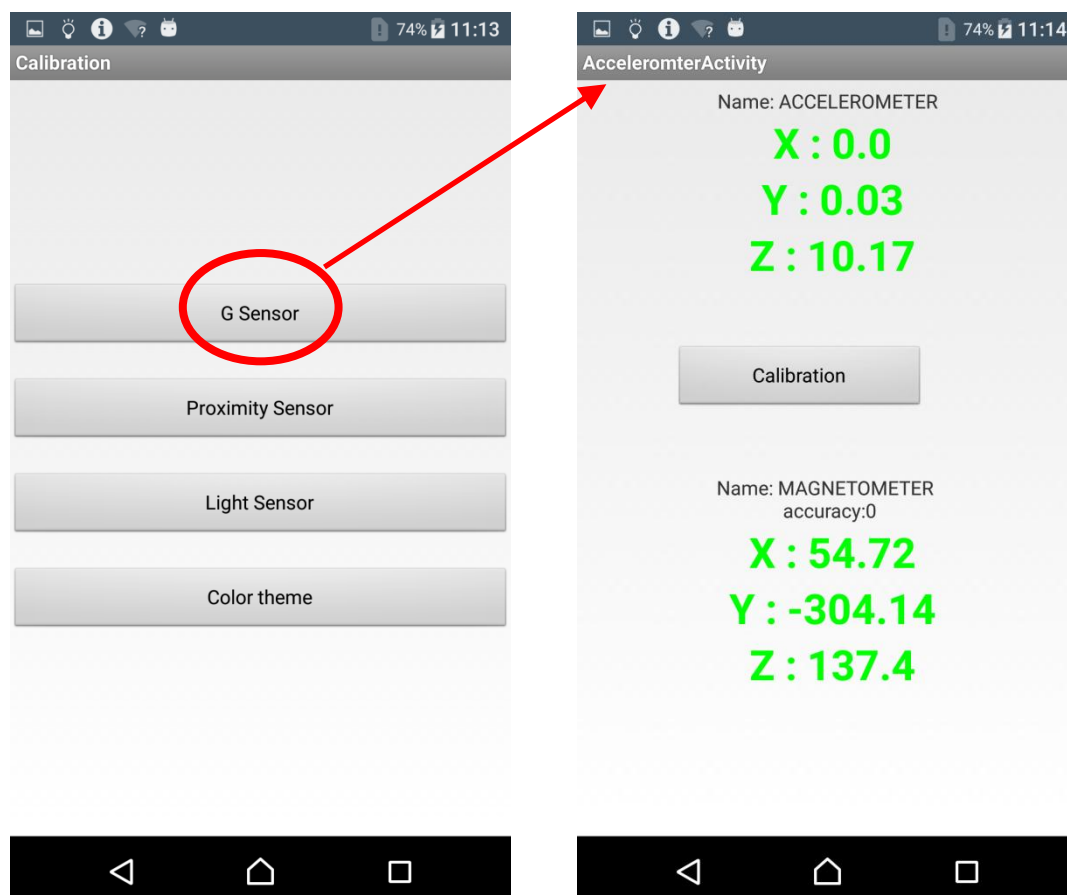
There would be four items presented for the calibration process of G Sensor, Proximity Sensor, Light Sensor and Color theme.



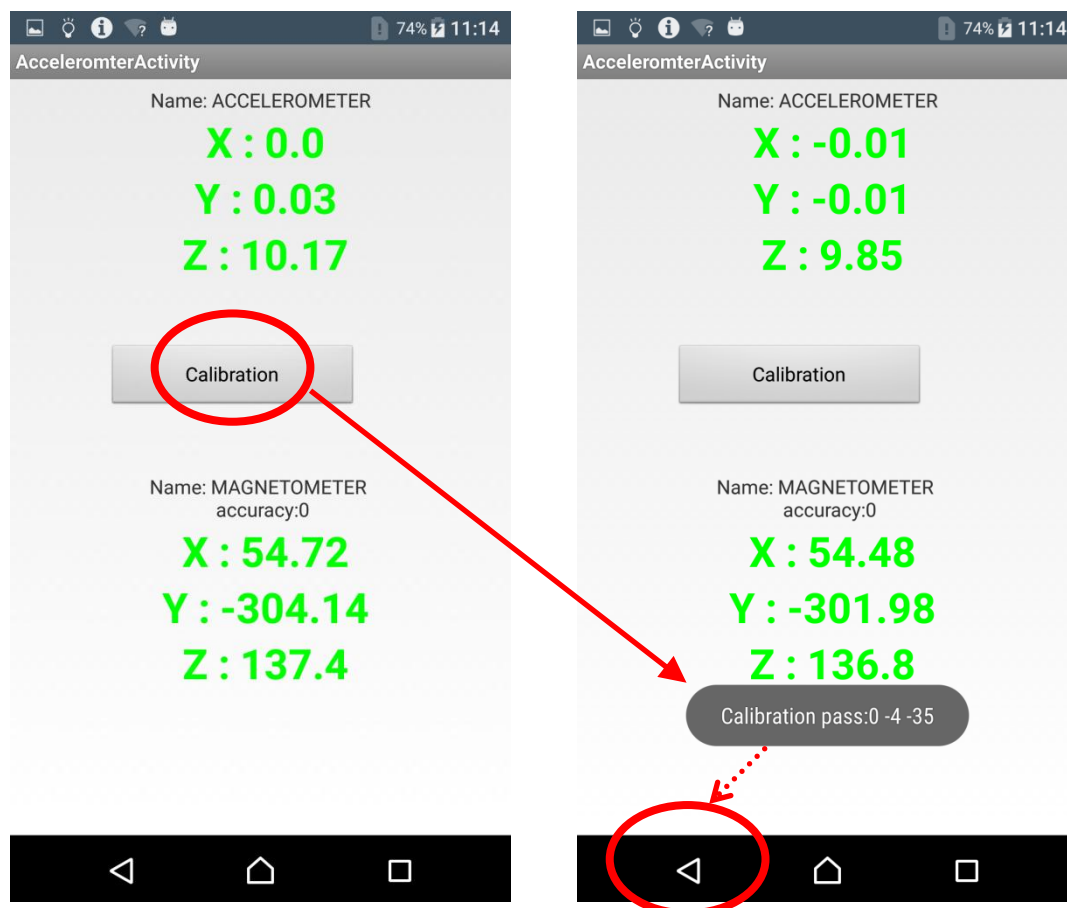
2.2 G Sensor

Select “G Sensor” item in calibration tool’s main menu to enter the main page of G sensor calibration composed Accelerometer and Magnetometer.

Please place the device on stable and horizontal flat plane (e.g. table).



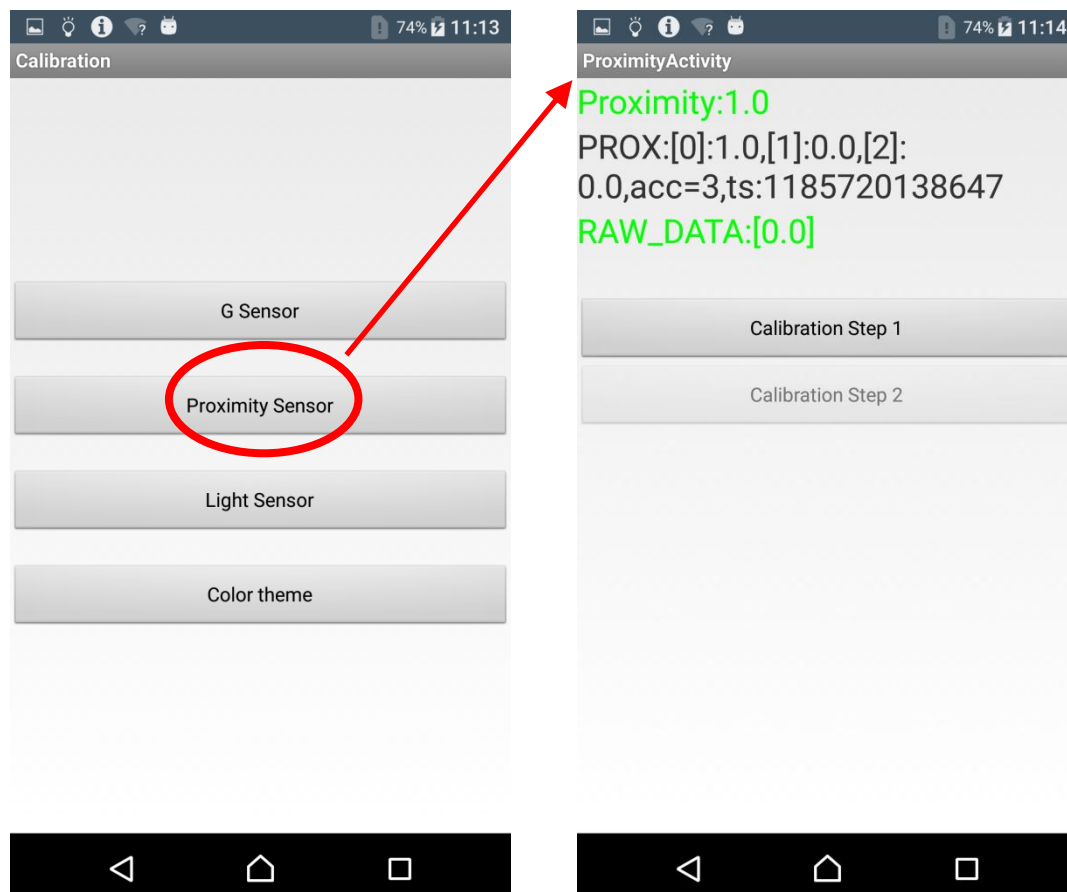
Press button "Calibration", and the calibration process will start immediately. Please do not move the device during the calibration procedure.
Toast "Calibration pass" appears to show the calibration success. If the toast does not appear, please go back to the main menu and try it again.



Press return button to go back to the main page.

2.3 Proximity Sensor

Select “Proximity Sensor” item in Calibration Tool’s main menu to enter the main page of Proximity Sensor calibration.



SONY

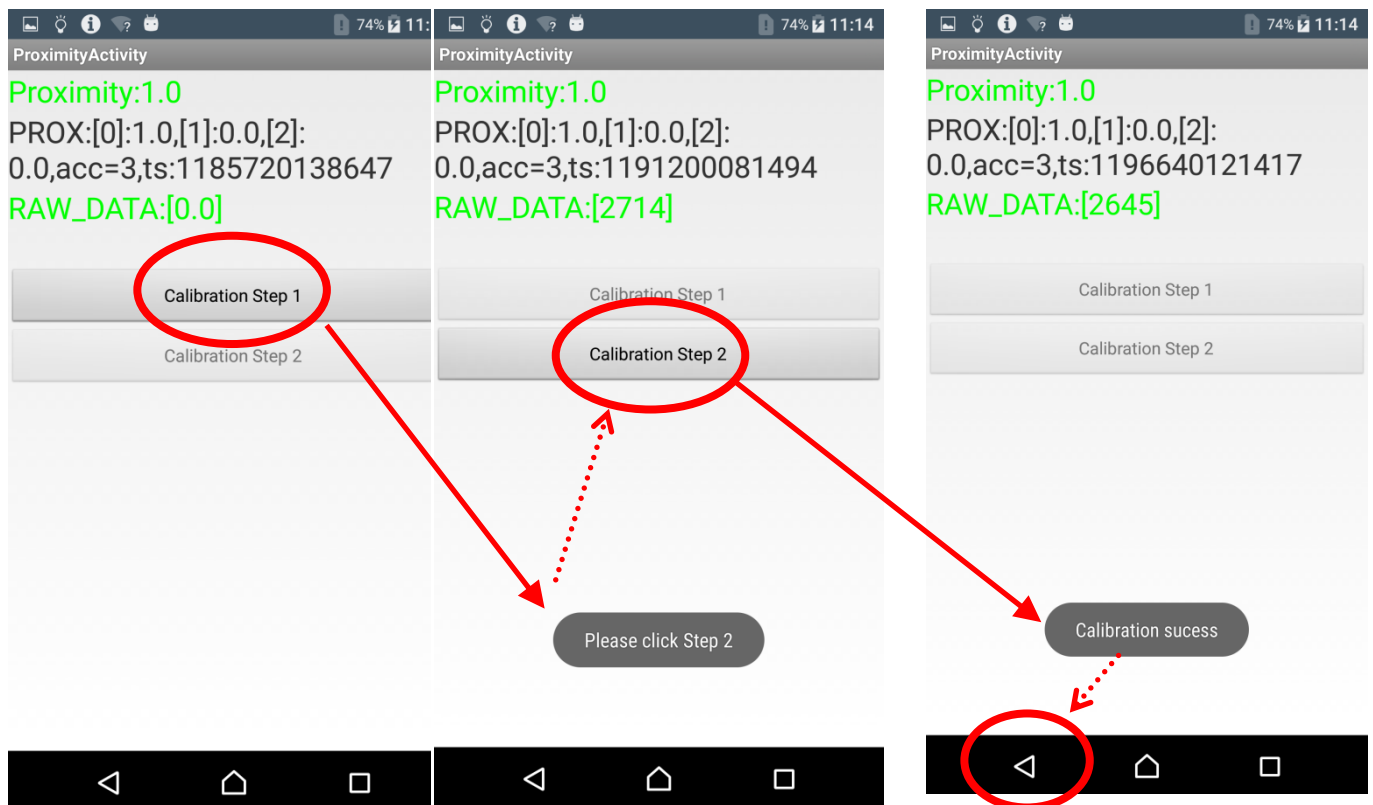
Test & Calibration (elect)

Please place the device on stable and horizontal flat plane (e.g. table). Don't cover the device by anything during the calibration.

Press "Calibration Step1" button to start 1st calibration. A short time later, a toast "Please click Step 2" appears which indicates 1st calibration succeeded.

After that, press "Calibration Step 2" button to start 2nd calibration. After a short time later, a toast "Calibration success" appears.

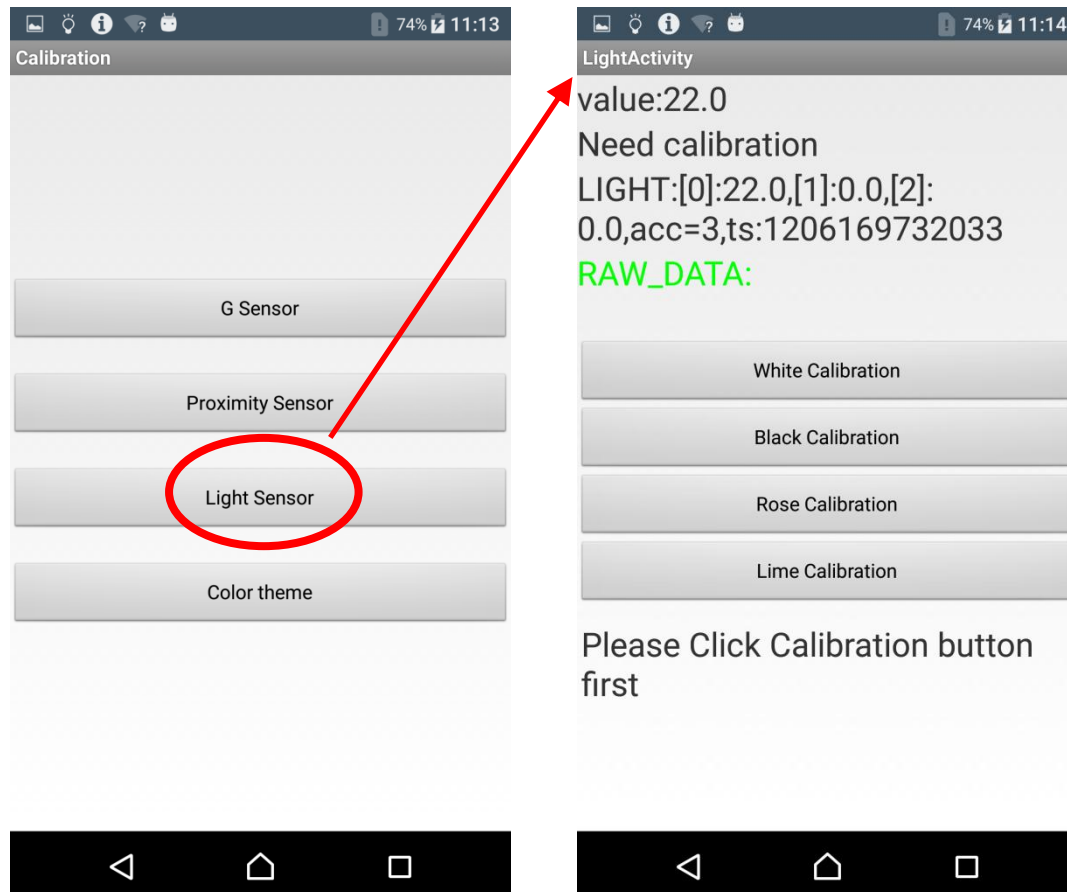
If these toasts don't appear, please go back to the main page and try it.



Press return button to go back to the main page.

2.4 Ambient Light Sensor

Select “Light Sensor” item in Calibration Tool’s main menu to enter the main page of Light Sensor calibration.

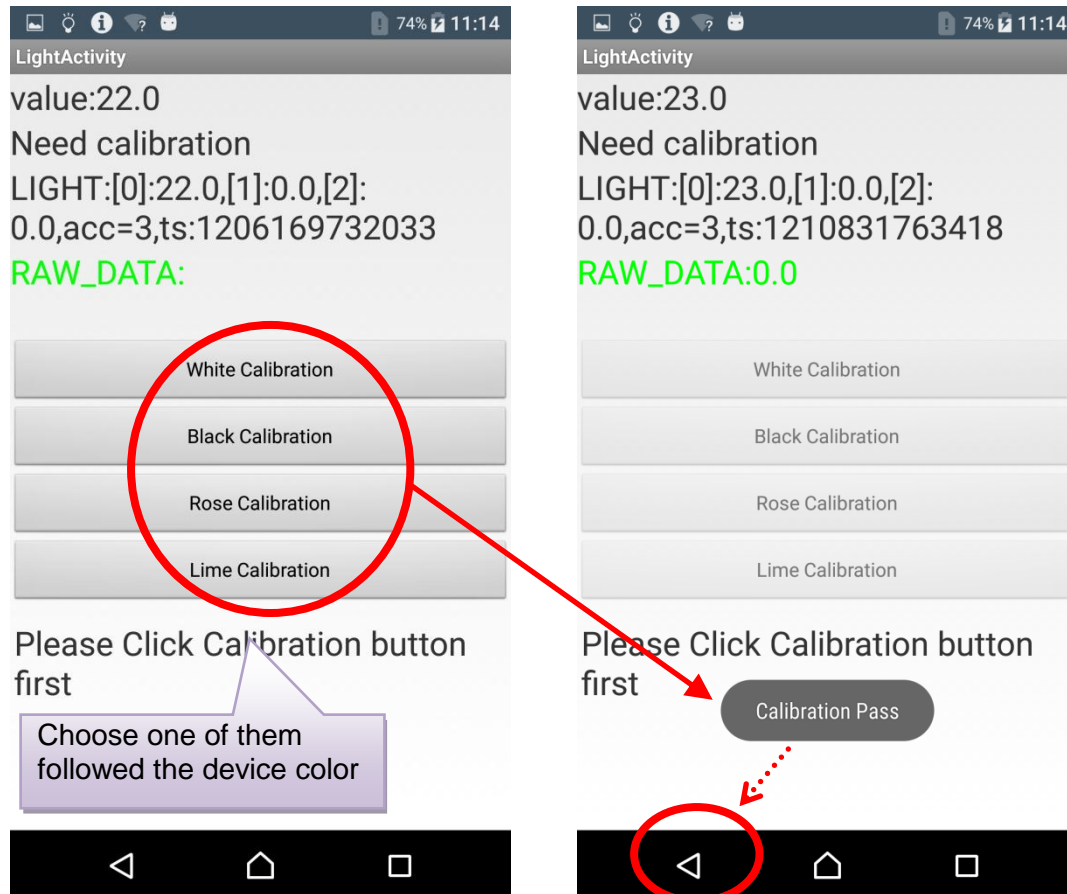


Ambient Light Sensor calibration would require light box instrument which might not be equipped in Service Center, so the calibration option is not applicable; only the option to reset to default calibration value is provided.

Press button "DEFULT" to enter the confirmation page of calibration reset.
In the confirmation page, press button “YES” and the calibration reset process will be started after 3 seconds countdown.

There are 4 buttons on the page for each phone device color. Please choose one of them followed the device color to start ambient light calibration. A short time later, a toast “Calibration Pass” appears which indicates the calibration succeeded.

If these toasts don't appear, please go back to the main page and try it.

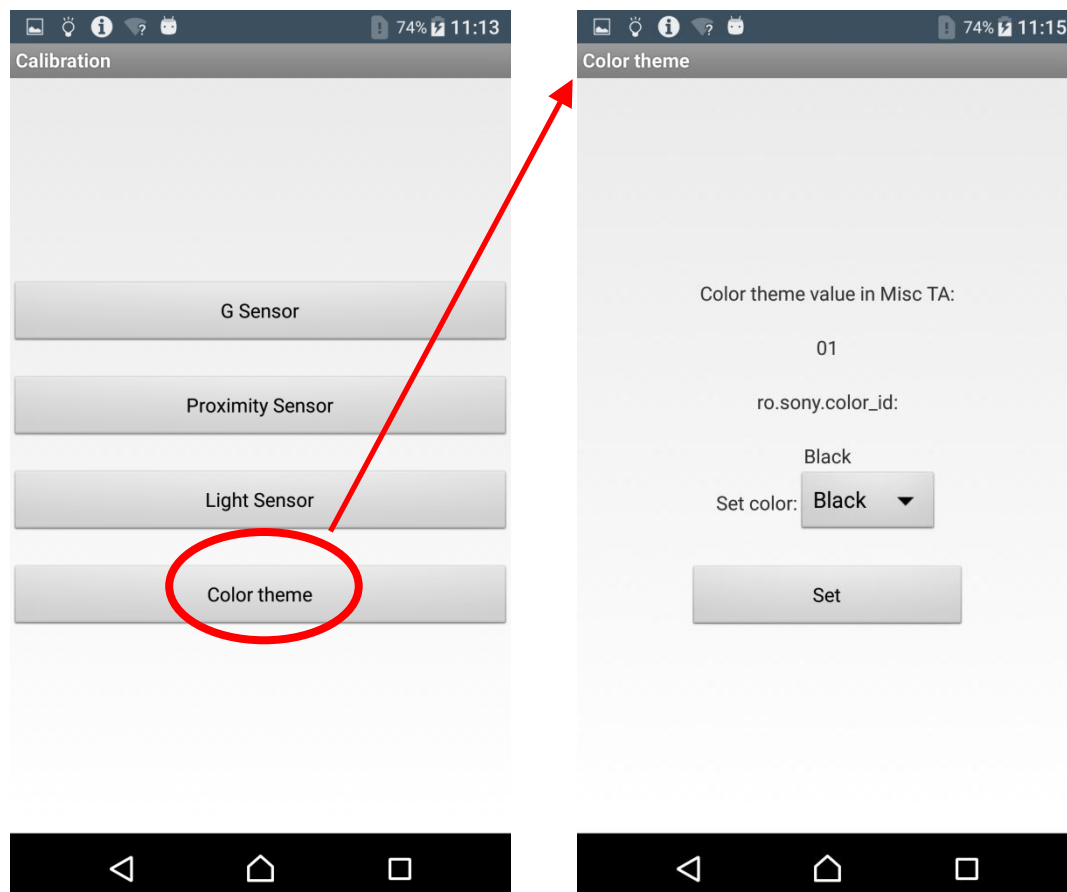


Press return button to go back to the main page.

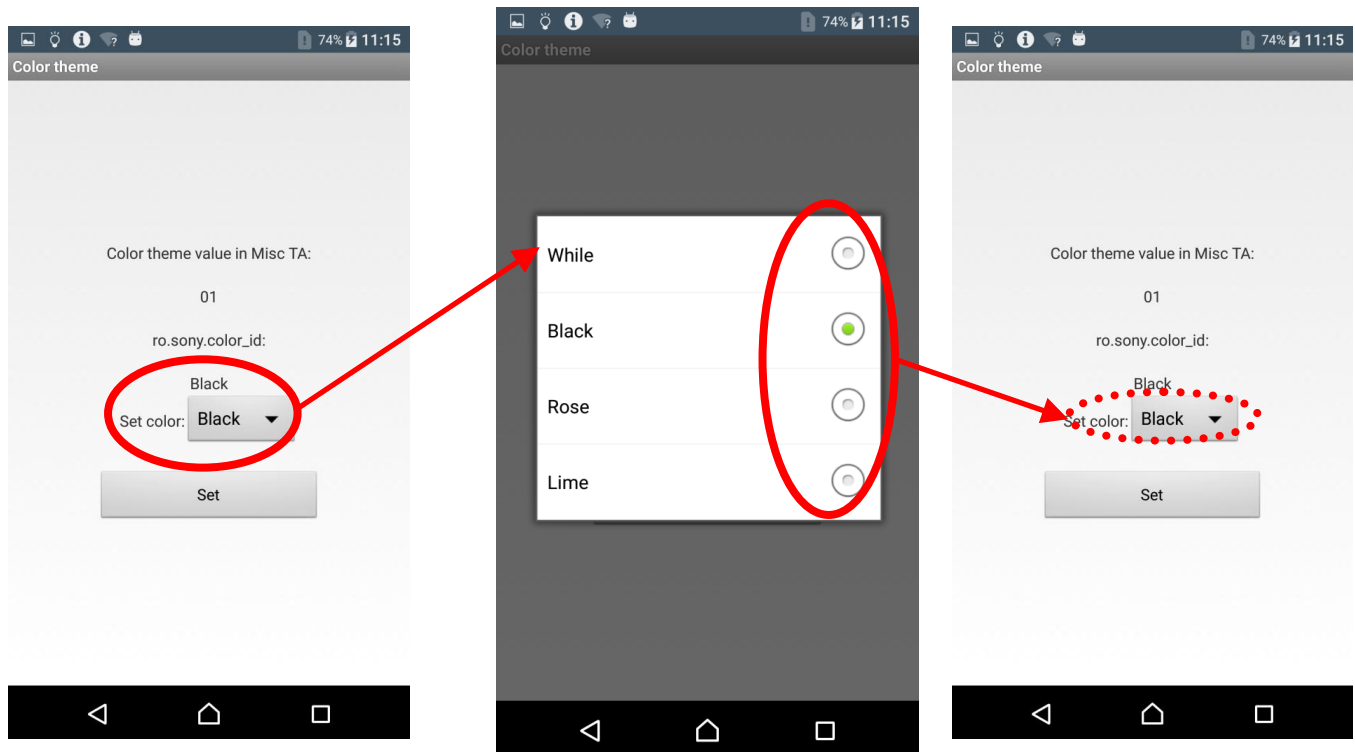
2.5 Color Theme

The chapter shows the steps of the default Color Theme modification.

(1) Select “Color Theme” item in Calibration tool main menu to enter the page of Color Theme.

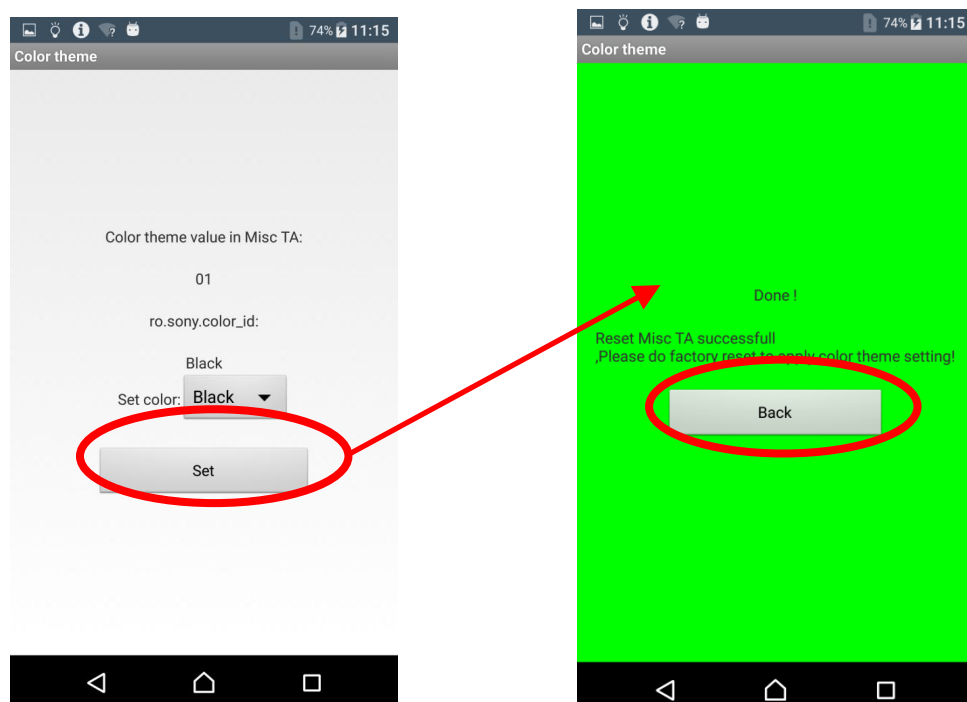


(2) Click a button at “Set color:” line and moves to new page which shows 4 option buttons. Click one of the option buttons to choose the device color.
Please confirm the next page shows your selected color name correctly.



(3) Click “Set” button to reset color theme. After the procedure completed, the result screen will be presented. Press button “BACK” to return to main screen.

Note: Please remember to do factory reset after change the Color Theme, the SONY color theme mechanism will be running in the first time initialization



3 Revision History

Rev.	Date	Changes / Comments
1	2016-06-17	Initial release
2	2016-06-27	Add an attention about phone software version